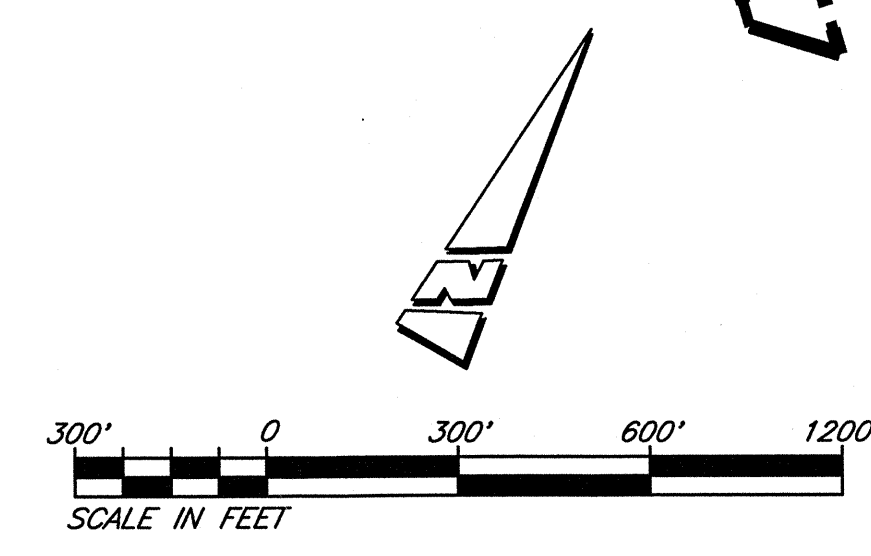
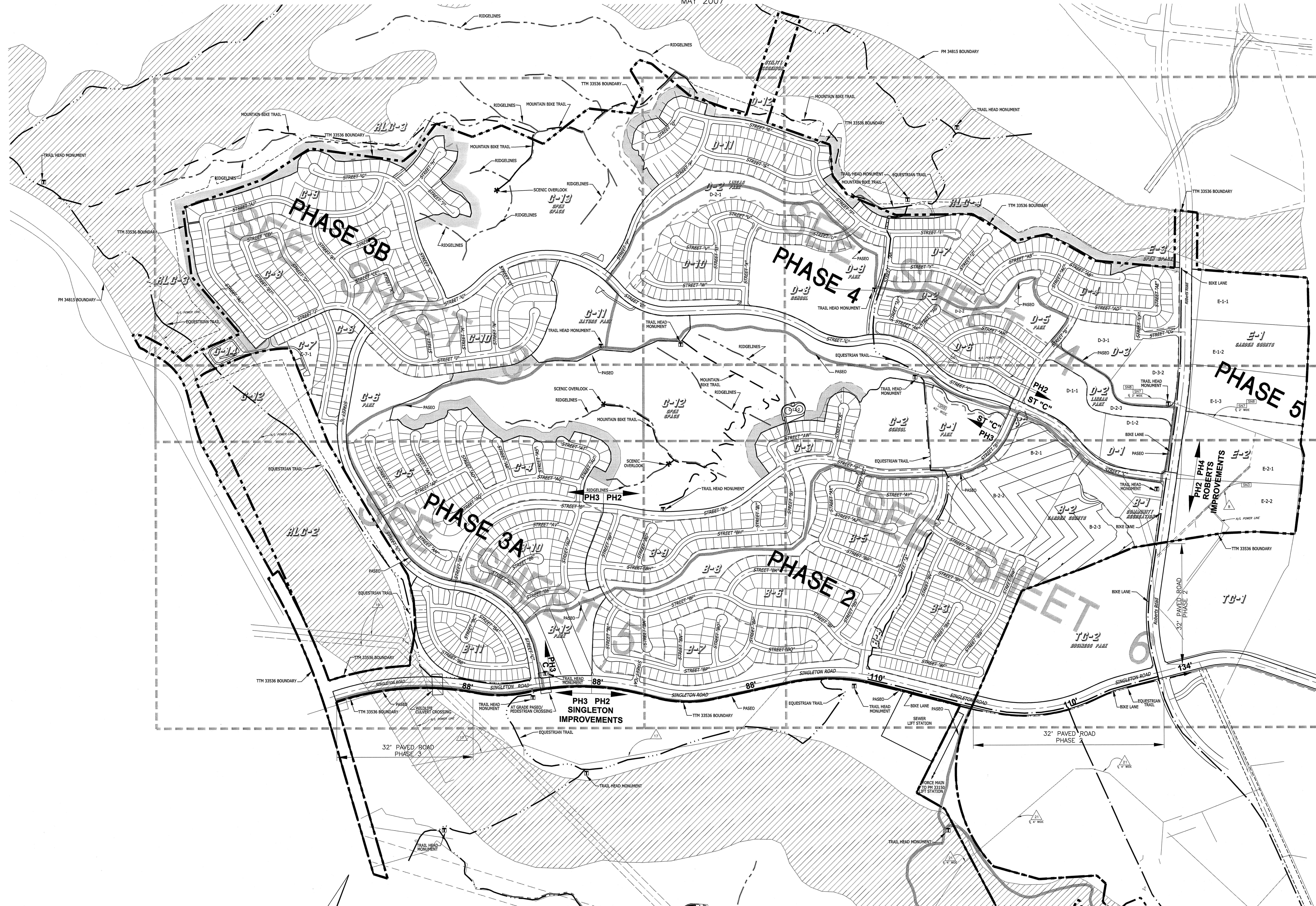


IN THE CITY OF CALIMESA, COUNTY OF RIVERSIDE, STATE OF CALIFORNIA
TENTATIVE TRACT MAP NO. 33536

BEING A SUBDIVISION OF PARCEL 1 RECORDED ON JUNE 15, 2004,
 AS INSTRUMENT NO. 2004-049674 AS SHOWN ON PARCEL MAP 31922
 ON FILE IN BOOK PM 209 AT PAGES 31 THROUGH 38, INCLUSIVE, RECORDS
 OF RIVERSIDE COUNTY, LYING WITHIN SECTIONS 23, 25 TO 27 OF TOWNSHIP 2 SOUTH,
 RANGE 2 WEST, S.B.M. ALL IN THE CITY OF CALIMESA, COUNTY OF RIVERSIDE
 STATE OF CALIFORNIA
 MAY 2007



INDEX MAP
 SCALE: 1" = 300'

AMENDMENTS		
DATE	NO.	DESCRIPTION

Stantec
 28800 Central Expressway, Suite 300, Menlo Park, CA 94025-5024 (650) 407-4300
 SCALE: AS NOTED
 DATE: AUGUST 2005

IN THE CITY OF CALIMESA
**TENTATIVE TRACT
 MAP NO. 33536**
 FOR: SUNCAL COMPANIES

AS SUB. 05/10/2007



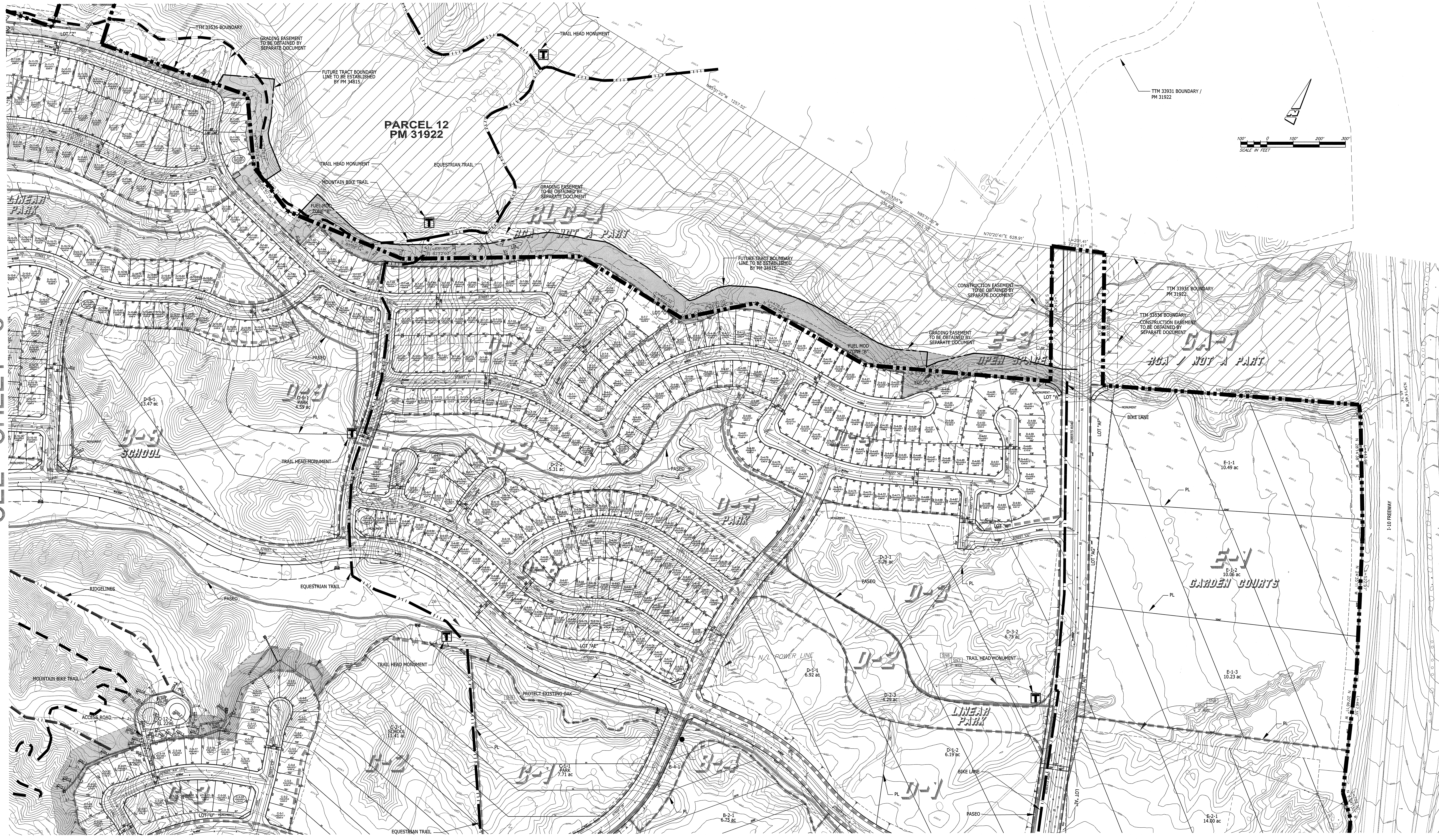
SEE SHEET 4

SEE SHEET 5

AMENDMENTS DATE: NO. DESCRIPTION:		 2280 Colton Avenue, Suite 200, Merino, WA, CA 95357-8247 (916) 997-8300 SCALE: AS NOTED DATE: AUGUST 2005	IN THE CITY OF CALMESA TENTATIVE TRACT MAP NO. 33536 FOR: SUNCAL COMPANIES	3 OF 7 SHEETS
DATE: AUGUST 2005				

PROJECT NO. 05-2005-0001 - 2005-08-05 - 10:00 AM - 10:00 AM
 AS SUB. 05/10/2007

SEE SHEET 3



SEE SHEET 6

AMENDMENTS		
DATE	NO.	DESCRIPTION

Stantec
 2280 Galois Avenue, Suite 300, Irvine, CA 92614-1014 (949) 697-8300
 SCALE: AS NOTED
 DATE: AUGUST 2005

IN THE CITY OF CALMESA
 TENTATIVE TRACT
 MAP NO. 33536

AS SUB. 05/10/2007
 D:\P\PROJECTS\33536\33536.DWG
 PLOTTER: HP 1000
 DATE: 8/10/05
 TIME: 10:00 AM
 USER: JLM
 PLOTTER: HP 1000
 DATE: 8/10/05
 TIME: 10:00 AM
 USER: JLM

SEE SHEET 4

SEE SHEET 5



GRADING EASEMENT TO BE OBTAINED BY SEPARATE DOCUMENT

SCALE IN FEET

0 100 200 300

AMENDMENTS	
DATE	DESCRIPTION

Stantec
 27000 Central Avenue, Suite 300, Merced, CA 95351-9024 (951) 687-6300
 SCALE: AS NOTED
 DATE: AUGUST 2005

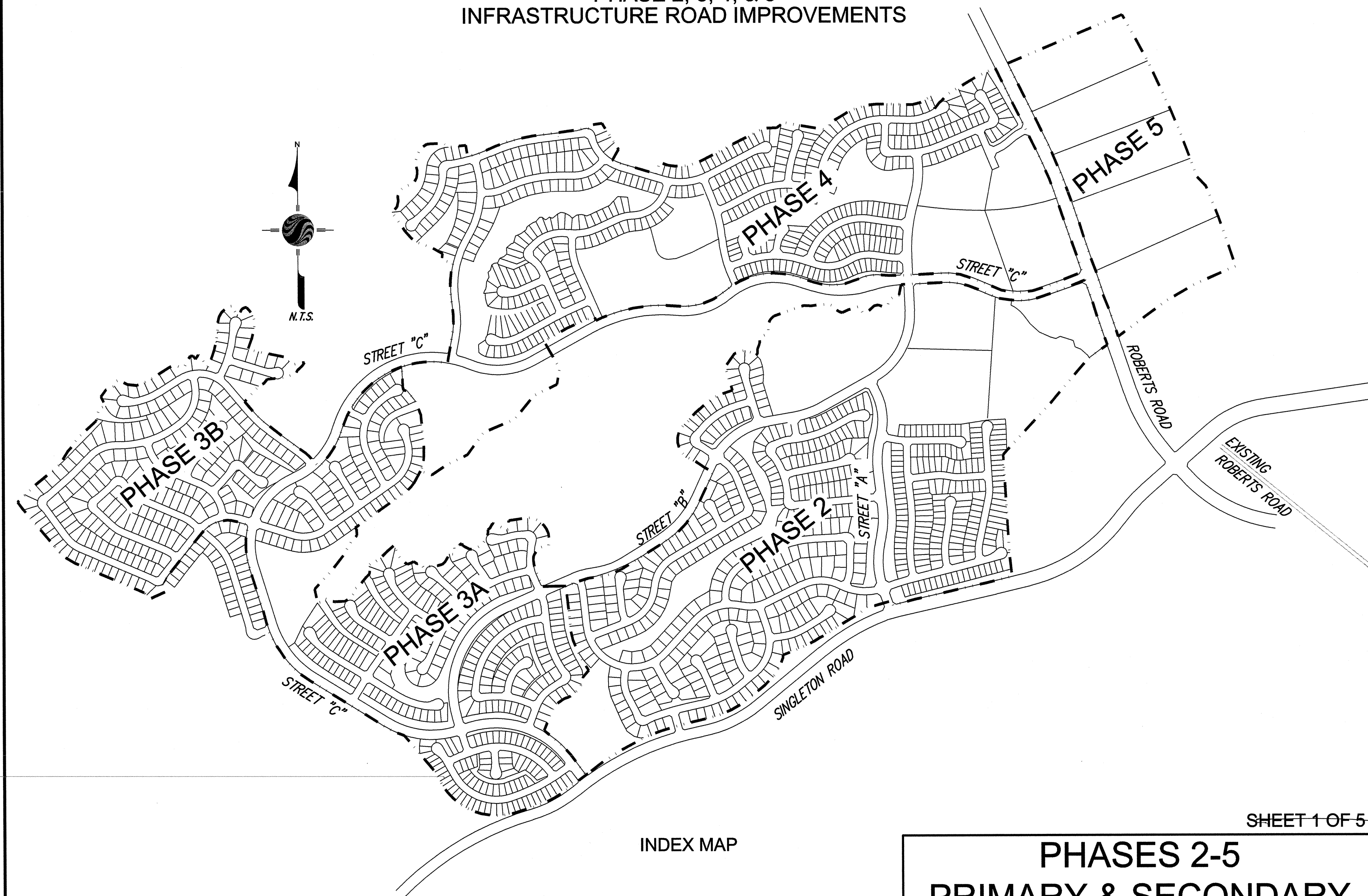
IN THE CITY OF CALIFORNIA
TENTATIVE TRACT MAP NO. 33536

PROJECT NO. 051012007
 DATE: 05/10/2007
 AS SHOWN BY MAP

IN THE CITY OF CALIMESA, COUNTY OF RIVERSIDE, STATE OF CALIFORNIA
TENTATIVE TRACT MAP NO. 33536

BEING A SUBDIVISION OF PARCEL 1 RECORDED ON JUNE 15, 2004,
 AS INSTRUMENT NO. 2004-0459674 AS SHOWN ON PARCEL MAP 31922
 ON FILE IN BOOK PM 209 AT PAGES 31 THROUGH 38, INCLUSIVE, RECORDS
 OF RIVERSIDE COUNTY, LYING WITHIN SECTIONS 23, 25 TO 27 OF TOWNSHIP 2 SOUTH,
 RANGE 2 WEST, S.B.M. ALL IN THE CITY OF CALIMESA, COUNTY OF RIVERSIDE
 STATE OF CALIFORNIA
 MAY 2007

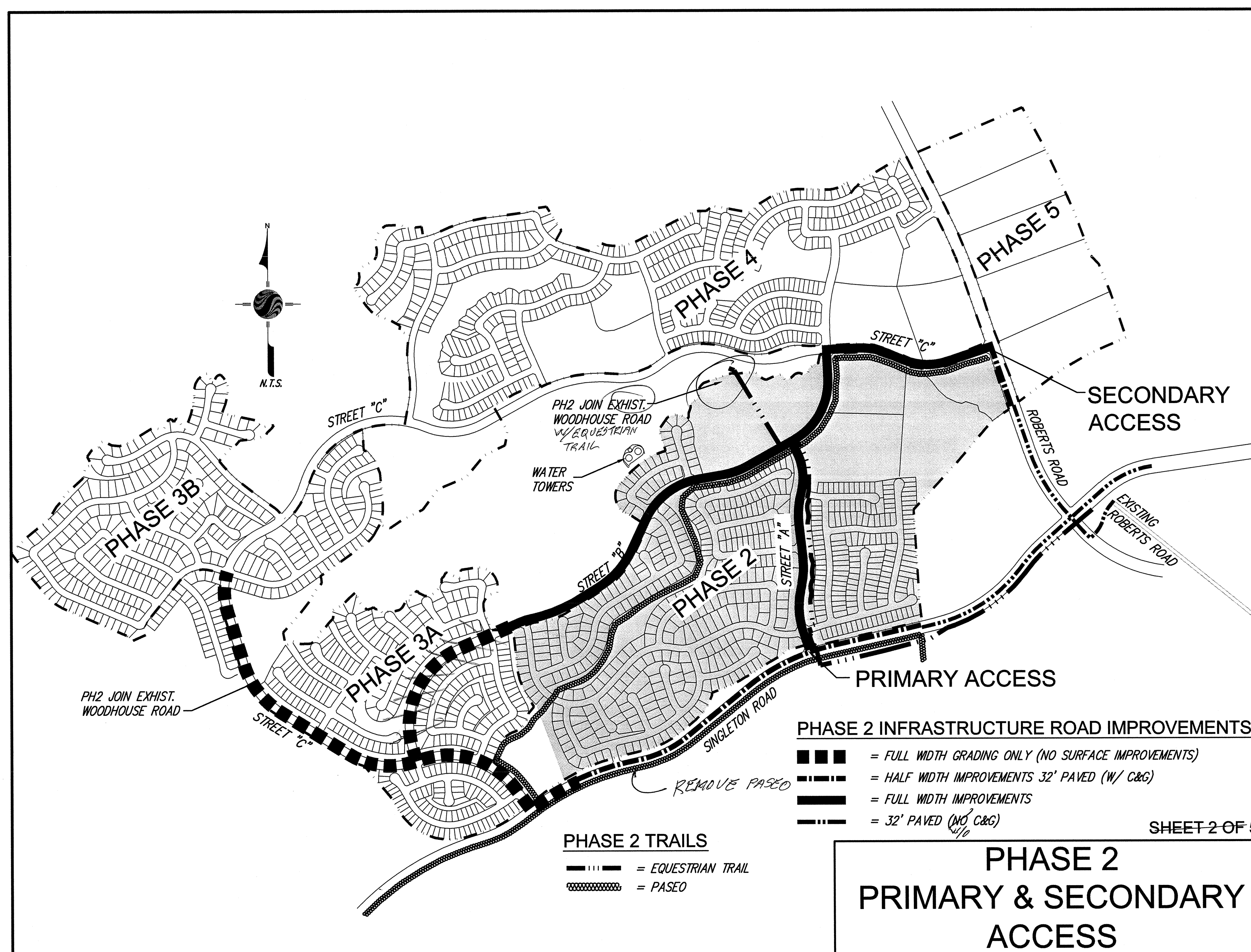
TTM NO. 33536
 PHASE 2, 3, 4, & 5
 INFRASTRUCTURE ROAD IMPROVEMENTS



INDEX MAP

PHASES 2-5
 PRIMARY & SECONDARY
 ACCESS

SHEET 1 OF 5

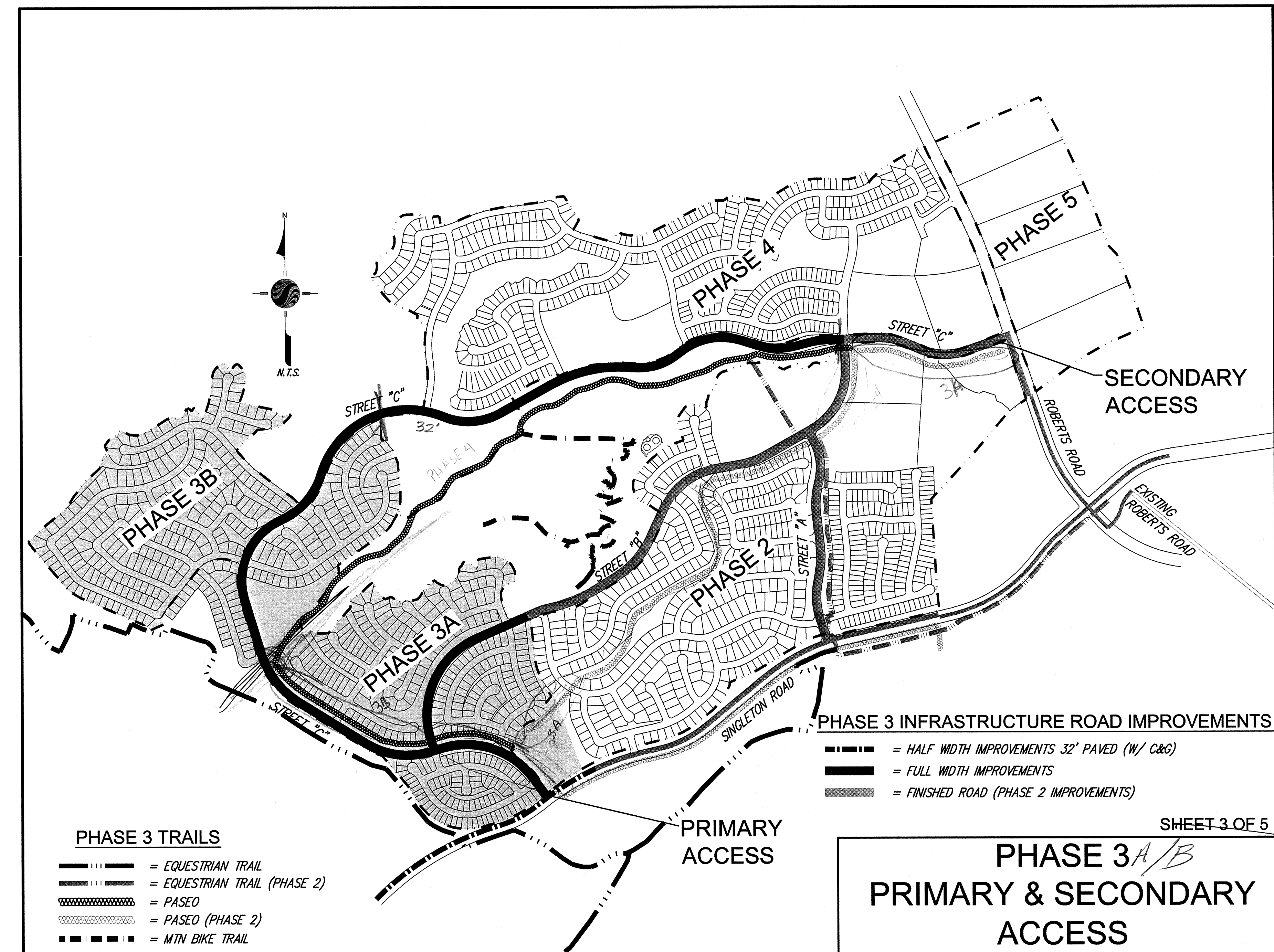


PHASE 2 INFRASTRUCTURE ROAD IMPROVEMENTS
 ■■■■ = FULL WIDTH GRADING ONLY (NO SURFACE IMPROVEMENTS)
 ■■■■ = HALF WIDTH IMPROVEMENTS 32' PAVED (W/C&G)
 ■■■■ = FULL WIDTH IMPROVEMENTS
 ■■■■ = 32' PAVED (W/C&G)

PHASE 2 TRAILS
 ——— = EQUESTRIAN TRAIL
 ——— = PASEO

PHASE 2
 PRIMARY & SECONDARY
 ACCESS

SHEET 2 OF 5

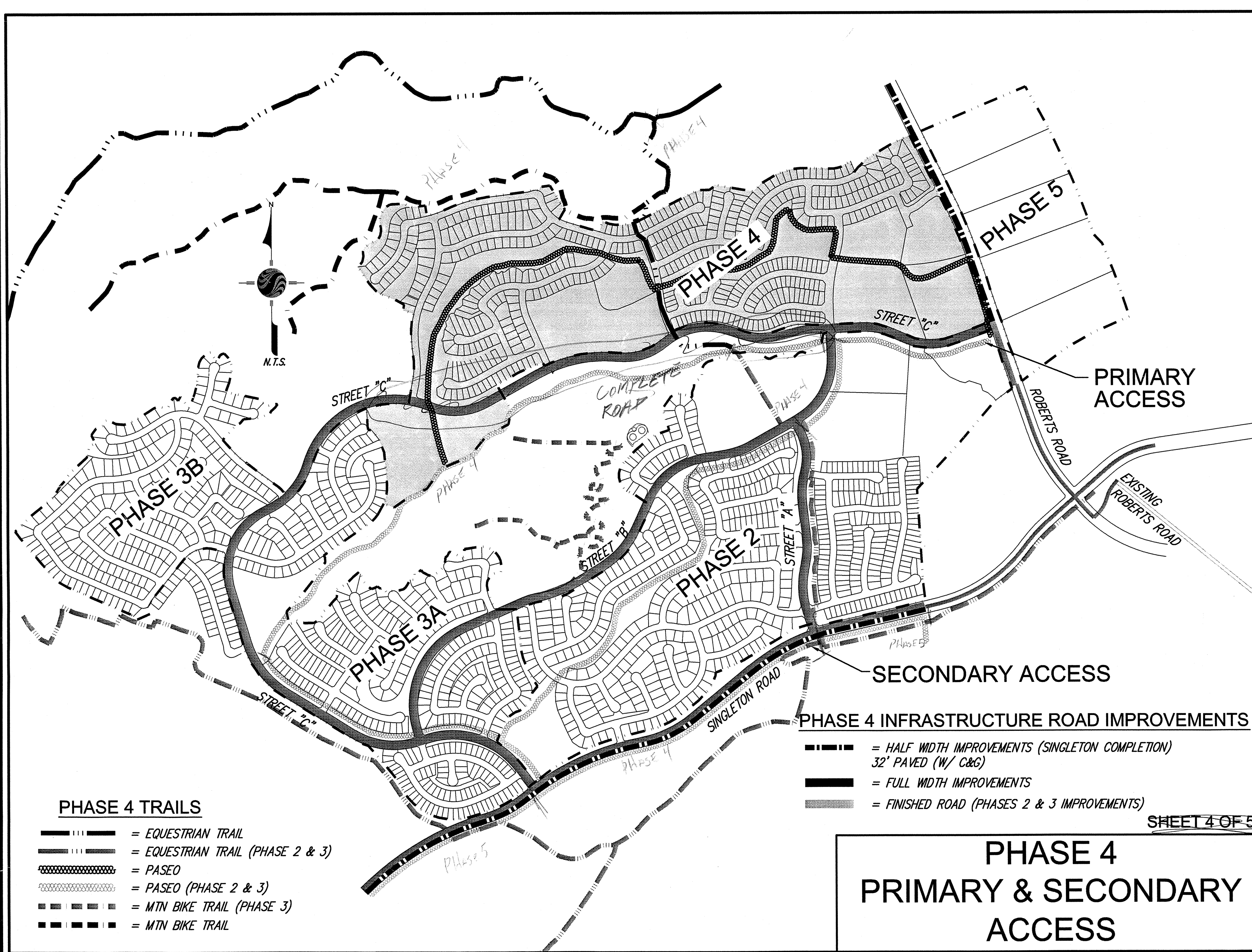


PHASE 3 INFRASTRUCTURE ROAD IMPROVEMENTS
 ■■■■ = HALF WIDTH IMPROVEMENTS 32' PAVED (W/C&G)
 ■■■■ = FULL WIDTH IMPROVEMENTS
 ■■■■ = FINISHED ROAD (PHASE 2 IMPROVEMENTS)

PHASE 3 TRAILS
 ——— = EQUESTRIAN TRAIL
 ——— = EQUESTRIAN TRAIL (PHASE 2)
 ——— = PASEO
 ——— = PASEO (PHASE 2)
 ——— = MIN BIKE TRAIL

PHASE 3A/B
 PRIMARY & SECONDARY
 ACCESS

SHEET 3 OF 5

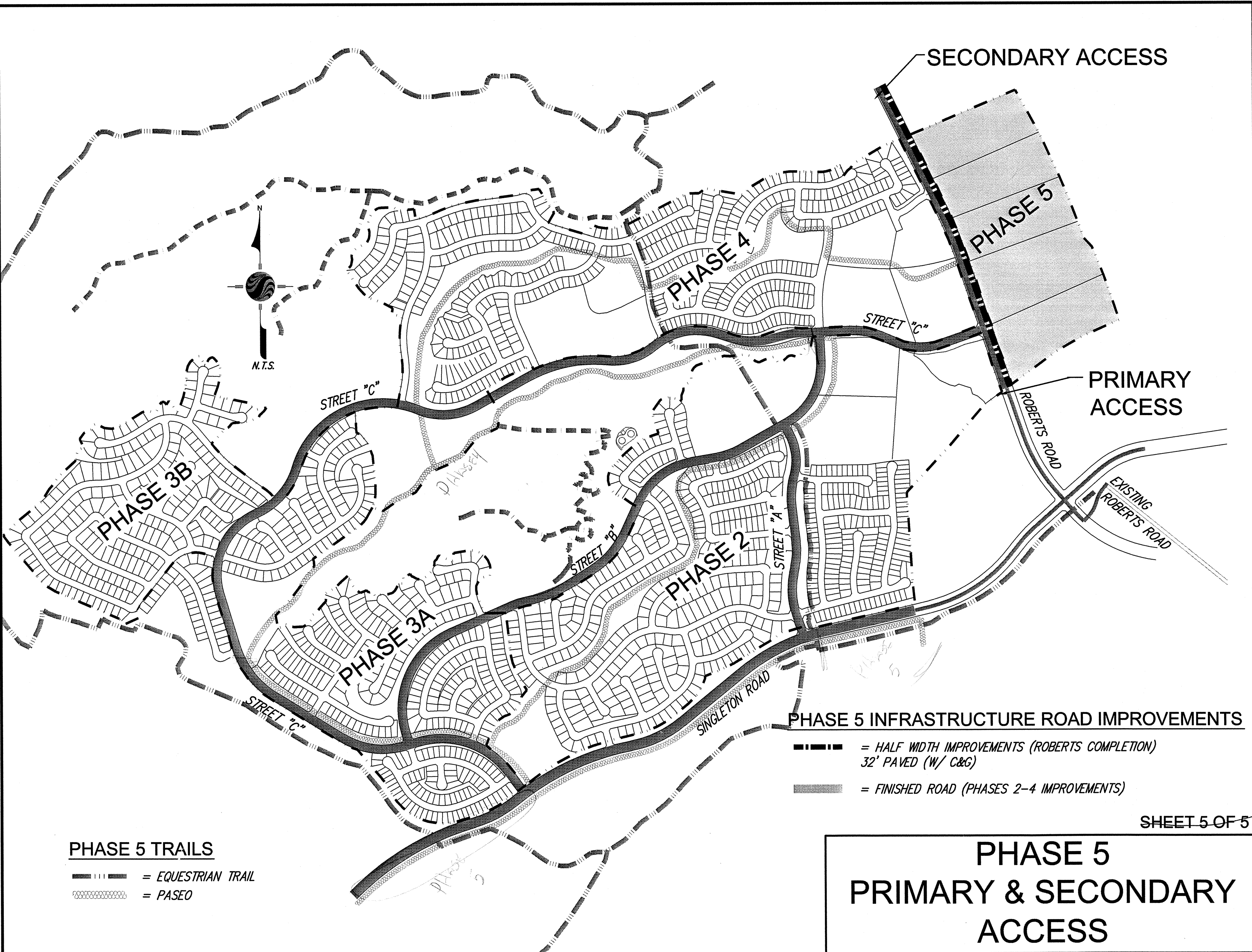


PHASE 4 INFRASTRUCTURE ROAD IMPROVEMENTS
 ■■■■ = HALF WIDTH IMPROVEMENTS (SINGLETON COMPLETION)
 ■■■■ = 32' PAVED (W/C&G)
 ■■■■ = FULL WIDTH IMPROVEMENTS
 ■■■■ = FINISHED ROAD (PHASES 2 & 3 IMPROVEMENTS)

PHASE 4 TRAILS
 ——— = EQUESTRIAN TRAIL
 ——— = EQUESTRIAN TRAIL (PHASE 2 & 3)
 ——— = PASEO
 ——— = PASEO (PHASE 2 & 3)
 ——— = MIN BIKE TRAIL (PHASE 3)
 ——— = MIN BIKE TRAIL

PHASE 4
 PRIMARY & SECONDARY
 ACCESS

SHEET 4 OF 5

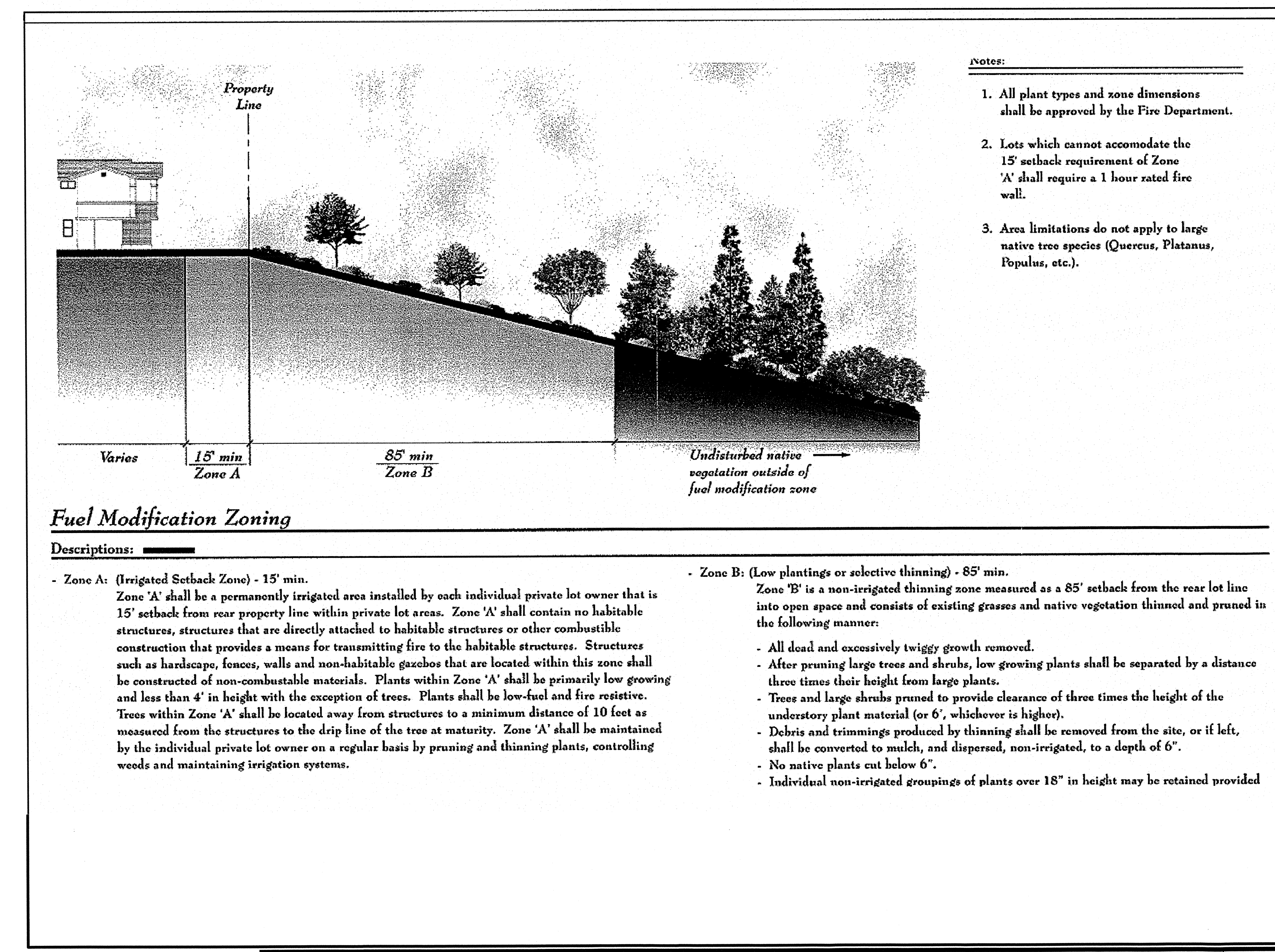


PHASE 5 INFRASTRUCTURE ROAD IMPROVEMENTS
 ■■■■ = HALF WIDTH IMPROVEMENTS (ROBERTS COMPLETION)
 ■■■■ = 32' PAVED (W/C&G)
 ■■■■ = FULL WIDTH IMPROVEMENTS
 ■■■■ = FINISHED ROAD (PHASES 2-4 IMPROVEMENTS)

PHASE 5 TRAILS
 ——— = EQUESTRIAN TRAIL
 ——— = PASEO

PHASE 5
 PRIMARY & SECONDARY
 ACCESS

SHEET 5 OF 5



- Notes:
- All plant types and zone dimensions shall be approved by the Fire Department.
 - Lots which cannot accommodate the 15' setback requirement of Zone 'A' shall require a 1 hour rated fire wall.
 - Area limitations do not apply to large native tree species (Quercus, Platanus, Populus, etc.).

Fuel Modification Zoning

Descriptions:

- Zone A: (Irrigated Setback Zone) - 15' min.
 Zone 'A' shall be a permanently irrigated area installed by each individual private lot owner that is 15' setback from rear property line within private lot areas. Zone 'A' shall contain no habitable structures, structures that are directly attached to habitable structures or other combustible construction that provides a means for transmitting fire to the habitable structures. Structures such as hardcape, fences, walls and non-habitable gazebos that are located within this zone shall be constructed of non-combustible materials. Plants within Zone 'A' shall be primarily low growing and less than 4' in height with the exception of trees. Plants shall be low-fuel and fire resistant. Trees within Zone 'A' shall be located away from structures to a minimum distance of 10 feet as measured from the structures to the drip line of the tree at maturity. Zone 'A' shall be maintained by the individual private lot owner on a regular basis by pruning and thinning plants, controlling weeds and maintaining irrigation systems.
- Zone B: (Low plantings or selective thinning) - 85' min.
 Zone 'B' is a non-irrigated thinning zone measured as a 85' setback from the rear lot line into open space and consists of existing grasses and native vegetation thinned and pruned in the following manner:
 - All dead and excessively twiggy growth removed.
 - After pruning large trees and shrubs, low growing plants shall be separated by a distance three times their height from large plants.
 - Trees and large shrubs pruned to provide clearance of three times the height of the underlying plant material (or 6', whichever is higher).
 - Debris and trimmings produced by thinning shall be removed from the site, or if left, shall be converted to mulch, and dispersed, non-irrigated, to a depth of 6".
 - No native plants cut below 6".
 - Individual non-irrigated groupings of plants over 18" in height may be retained provided

AMENDMENTS		
DATE	NO.	DESCRIPTION

Stantec
 2580 Cactus Avenue, Suite 200, Corona, CA, 92526-1024 (917) 897-8300
 SCALE: AS NOTED
 DATE: AUGUST 2005