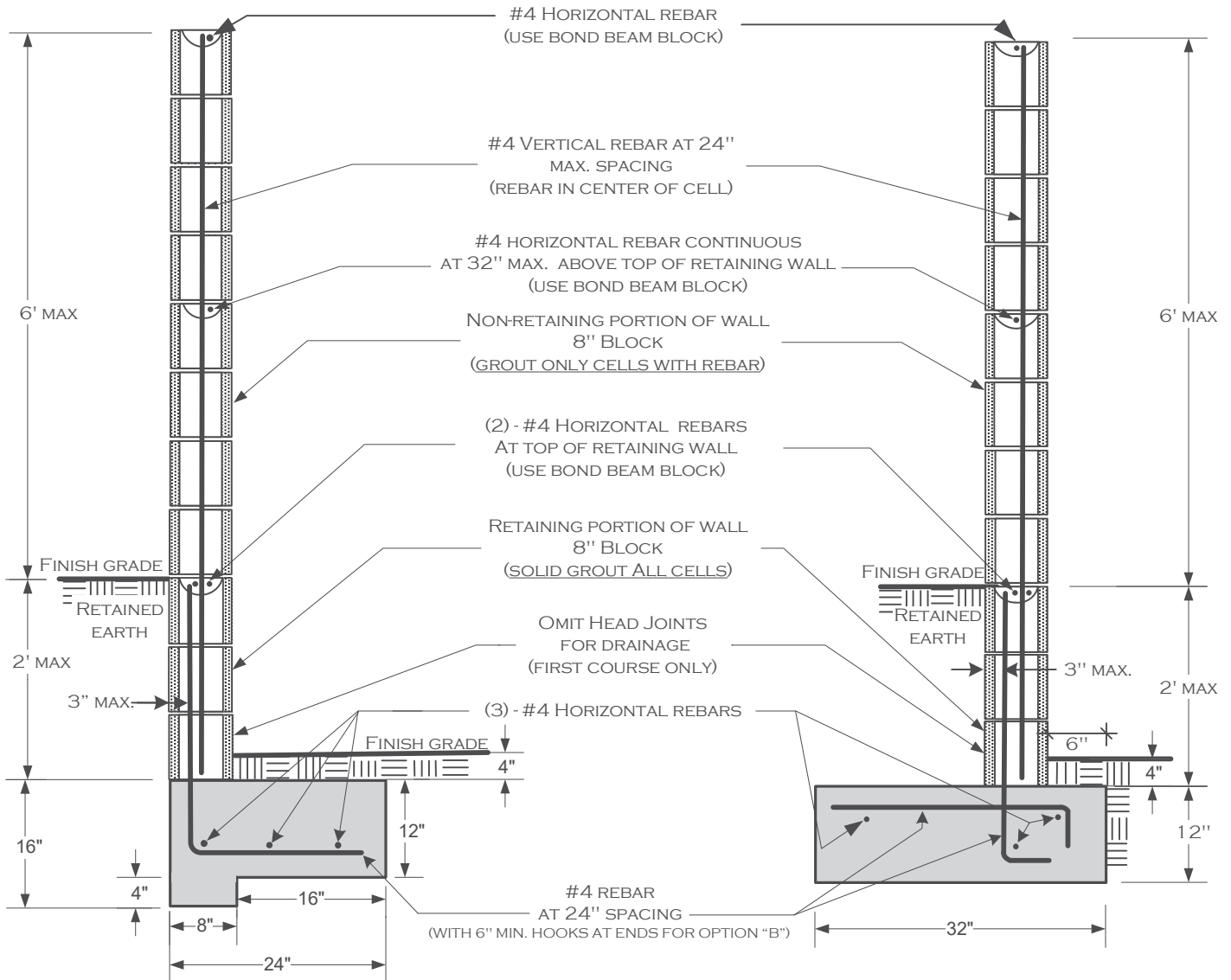


## FOOTING OPTION "A"

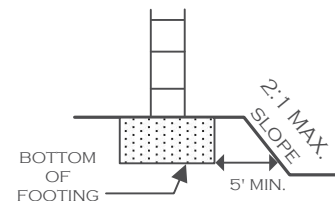
## FOOTING OPTION "B"



### THE FOLLOWING INSPECTIONS ARE REQUIRED:

- 1) **FOOTING**; EXCAVATION TRENCH CLEAN WITH STEEL IN PLACE AND SUPPORTED 3" ABOVE AND AWAY FROM THE SURROUNDING EARTH/DIRT.
- 2) **REBAR/PRE-GROUT**; BOND BEAM REBAR AND VERTICAL REBAR IN PLACE - INSPECTION PRIOR TO PLACING GROUT.
- 3) **FINAL**; AFTER GROUT IS PLACED - PRIOR TO ANY DECORATIVE CAP PLACEMENT.

ALL FOOTINGS ADJACENT TO SLOPES TO BE AT LEAST 5' TO DAYLIGHT AS SHOWN BELOW.



### NOTES:

- 1) FENCE HEIGHTS ARE REGULATED — CONSULT ZONING REGULATIONS BEFORE BEGINNING CONSTRUCTION.
- 2) NO WATER COURSE OR NATURAL DRAINAGE SHALL BE OBSTRUCTED.
- 3) ALL REBAR TO BE ASTM SPEC. A615, GRADE 40 MINIMUM.
- 4) ALL REBAR LAP SPLICES TO BE 24" MINIMUM.
- 5) ALL MASONRY UNITS TO BE ASTM C-90 GRADE N.
- 6) NOT DESIGNED FOR SURCHARGE LOADS FROM VEHICLES OR STRUCTURES.

### DISCLAIMER:

ALTERNATE DESIGNS MAY BE POSSIBLE WHEN PROVIDED WITH AN ENGINEERED ANALYSIS. USE OF THIS STANDARD DESIGN IS AT THE USER'S RISK AND CARRIES NO IMPLIED OR INFERRED GUARANTEE AGAINST FAILURE OR DEFECTS.

\*SEE PAGE 2 FOR ADDITIONAL INFORMATION\*

### WESTERN RIVERSIDE COUNTY CODE UNIFORMITY PROGRAM



909-795-9801

www.cityofcalimesa.gov

### CITY OF CALIMESA BUILDING & SAFETY DIVISION

### BLOCK WALL ATOP 2' RETAINING WALL

908 Park Avenue, Calimesa, CA 92320

Rev. June 2024

Block wall Handout

PAGE 1 OF 2

# REBAR PLACEMENT ILLUSTRATION

(SEE PAGE 1 FOR SPECIFIC REQUIREMENTS)

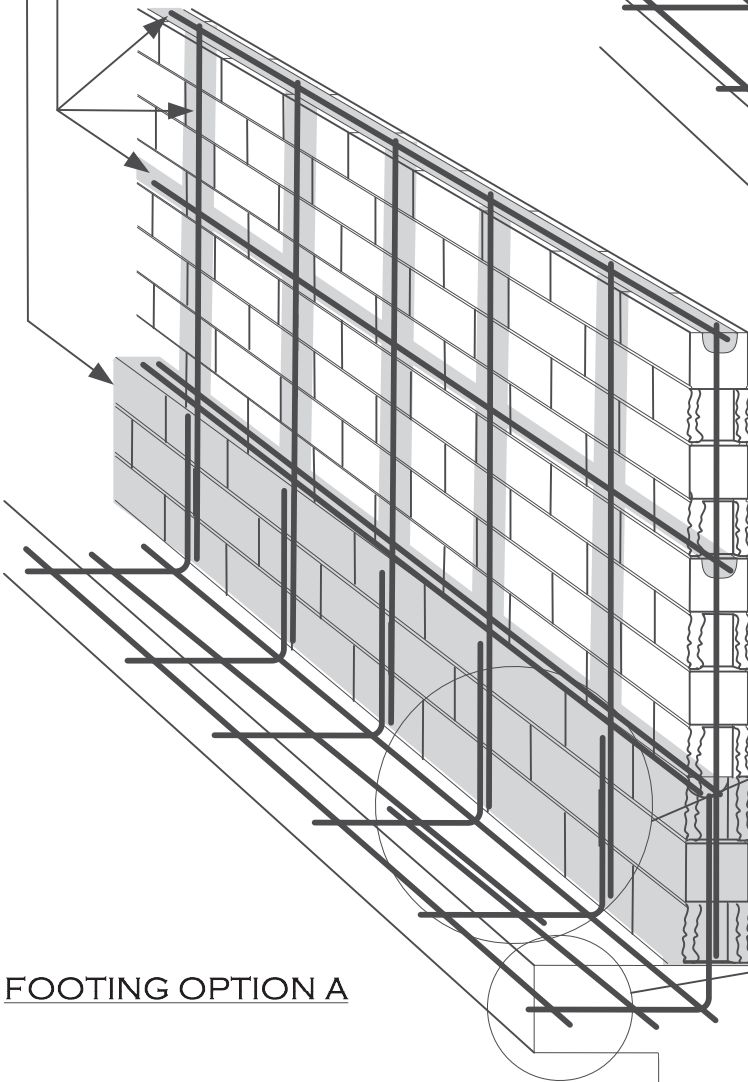
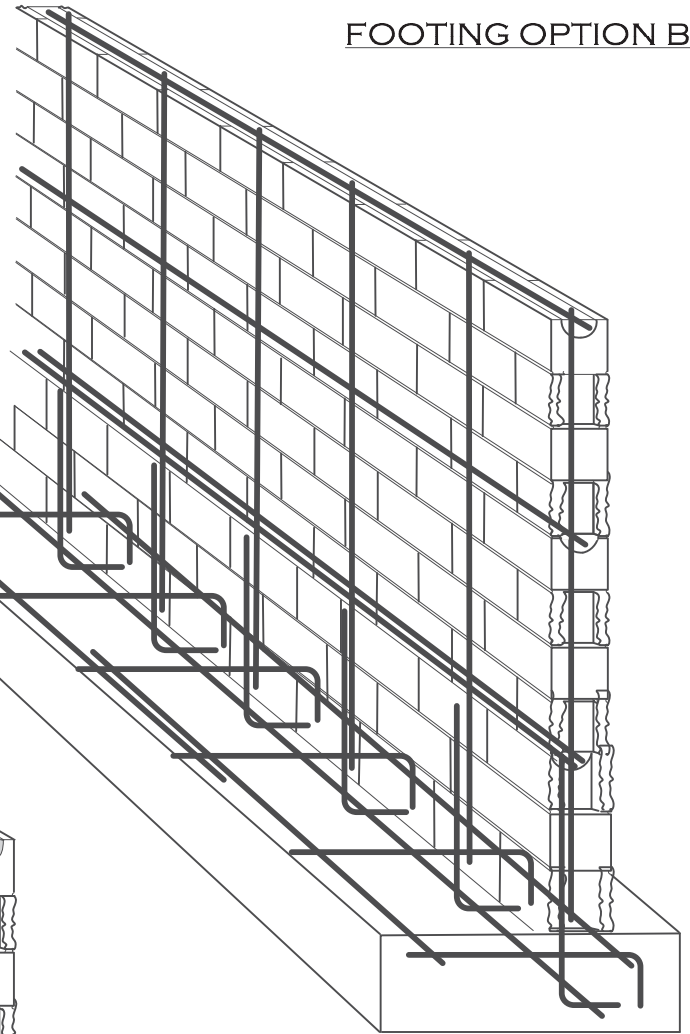
## FOOTING OPTION B

(TYPICAL)

FOR THE RETAINING PORTION OF WALL  
ALL CELLS TO BE GROUTED

(TYPICAL)

FOR NON-RETAINING PORTION OF WALL  
ONLY CELLS AND BOND BEAM COURSES  
WITH REBAR TO BE GROUTED  
(USE GROUT STOP MESH AS APPROPRIATE)



(TYPICAL)

ALL REBAR SPLICES  
24" MIN. OVERLAP

(TYPICAL)

ALL REBAR SHALL HAVE A  
MINIMUM OF 3" CONCRETE COVER  
AT FOOTINGS

## FOOTING OPTION A

### DESIGN PARAMETERS:

ACTIVE SOIL PRESSURE (PSF) = 30  
 PASSIVE SOIL BEARING (PSF) = 150  
 COEFFICIENT OF FRICTION = 0.25  
 ALLOWABLE SOIL BEARING (PSF) = 1500  
 WIND = 80 MPH, EXPOSURE C  
 SEISMIC:  
 NA=1.3, Nv=1.6, Z=0.4, SOIL PROFILE=Sd

### WESTERN RIVERSIDE COUNTY CODE UNIFORMITY PROGRAM



909-795-9801

[www.cityofcalimesa.gov](http://www.cityofcalimesa.gov)

**CITY OF CALIMESA**  
BUILDING & SAFETY DIVISION

**BLOCK WALL**  
ATOP 2' RETAINING WALL

908 Park Avenue, Calimesa, CA 92320

Rev. June 2024

Block Wall Handout

PAGE 1 OF 2