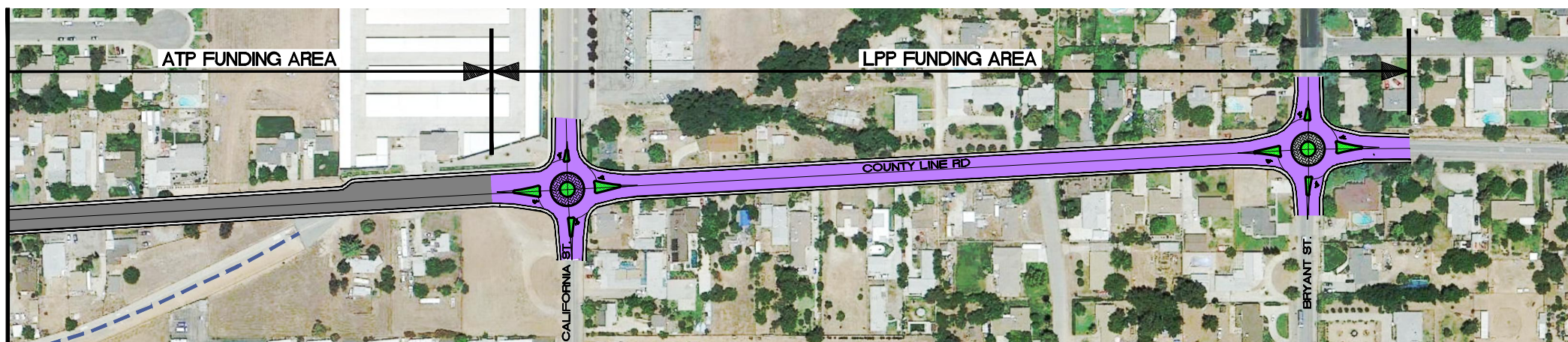
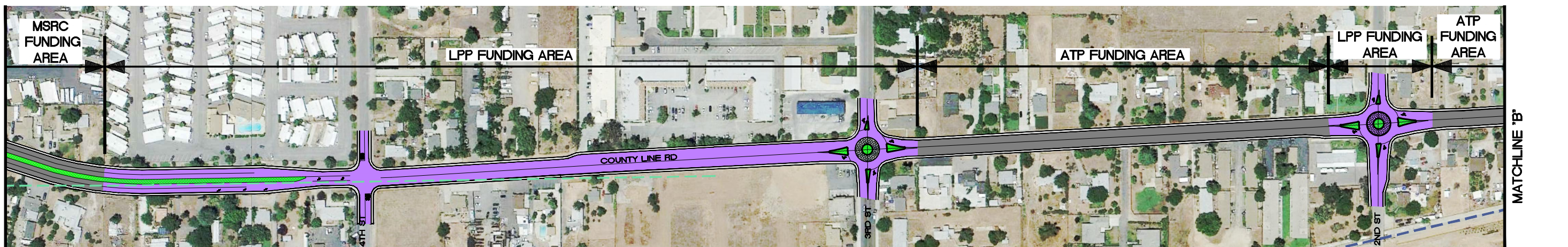
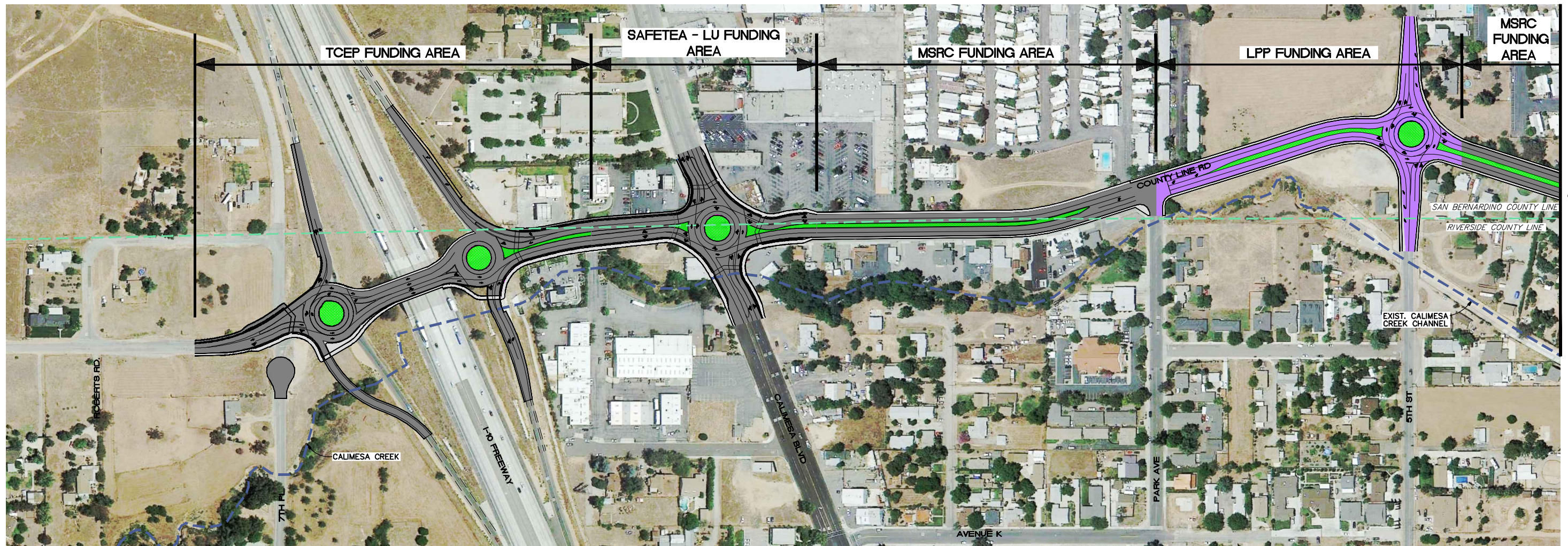
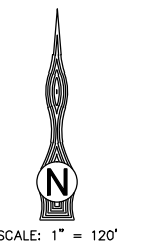


S:\CADD\133-29 County Line Road and I-10 Freeway\TIGER 2015 Exhibits\LPP Exhibits\LPP Feasibility Exhibit_01-19-2018.dwg



- LEGEND:**
- EXIST. STORM CHANNEL/CREEK
 - COUNTY BOUNDARY
 - LPP FUNDING AREA



SCALE: 1" = 120'

TKE ENGINEERING

TKE ENGINEERING, INC.
2305 CHICAGO AVENUE
RIVERSIDE, CA 92507
(951) 680-0440
FAX: (951) 680-0490

CITY OF CALIMESA

ATTACHMENT A
COUNTY LINE ROAD/
TRANSPORTATION CORRIDOR
EXHIBIT