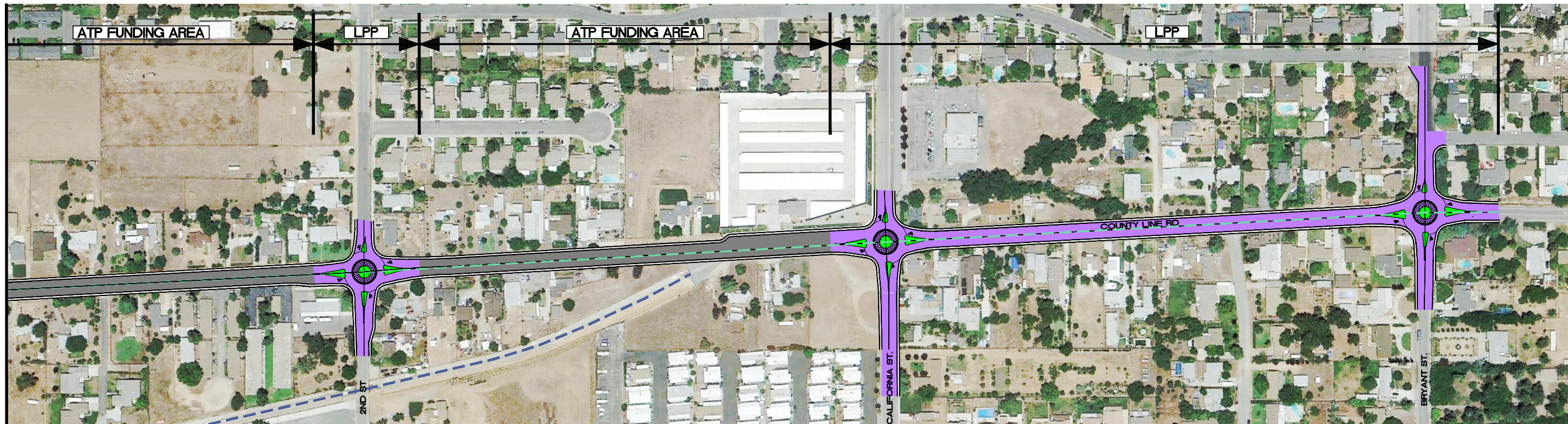





MATCHLINE - SEE BELOW



MATCHLINE - SEE ABOVE

LEGEND:

-  EXIST. STORM CHANNEL/CREEK
-  COUNTY BOUNDARY
-  LPP FUNDING AREA



FULL SIZE SCALE: 1" = 120'

**TKE**  
ENGINEERING

TKE ENGINEERING, INC.  
2305 CHICAGO AVENUE  
RIVERSIDE, CA 92507  
(951) 680-0440  
FAX: (951) 680-0490

**CITY OF CALIMESA**  
COUNTY LINE ROAD/  
TRANSPORTATION CORRIDOR  
EXHIBIT